

# Commission 2

## Urban Growth and Planning

10<sup>th</sup> World Congress of Metropolis  
24<sup>th</sup> November 2011 Porto Alegre Brazil

**metropolis** ●

## Purpose

To explore the implications of:

- ❖ Emerging Governance Arrangements on Urban Management
- ❖ Principles of Sustainable Development
- ❖ Inclusive Strategic Planning
- ❖ Outcome – oriented Governance models

## Commission 2 - Urban Growth and Planning

### Methodology

	City 1	City 2	City n	Summation
Urbanisation context and policy				
Urban economic development				
Social equity and inclusion				
Services and infrastructure				
Sustainability				
Governance				
Summation				

## Commission 2 - Urban Growth and Planning

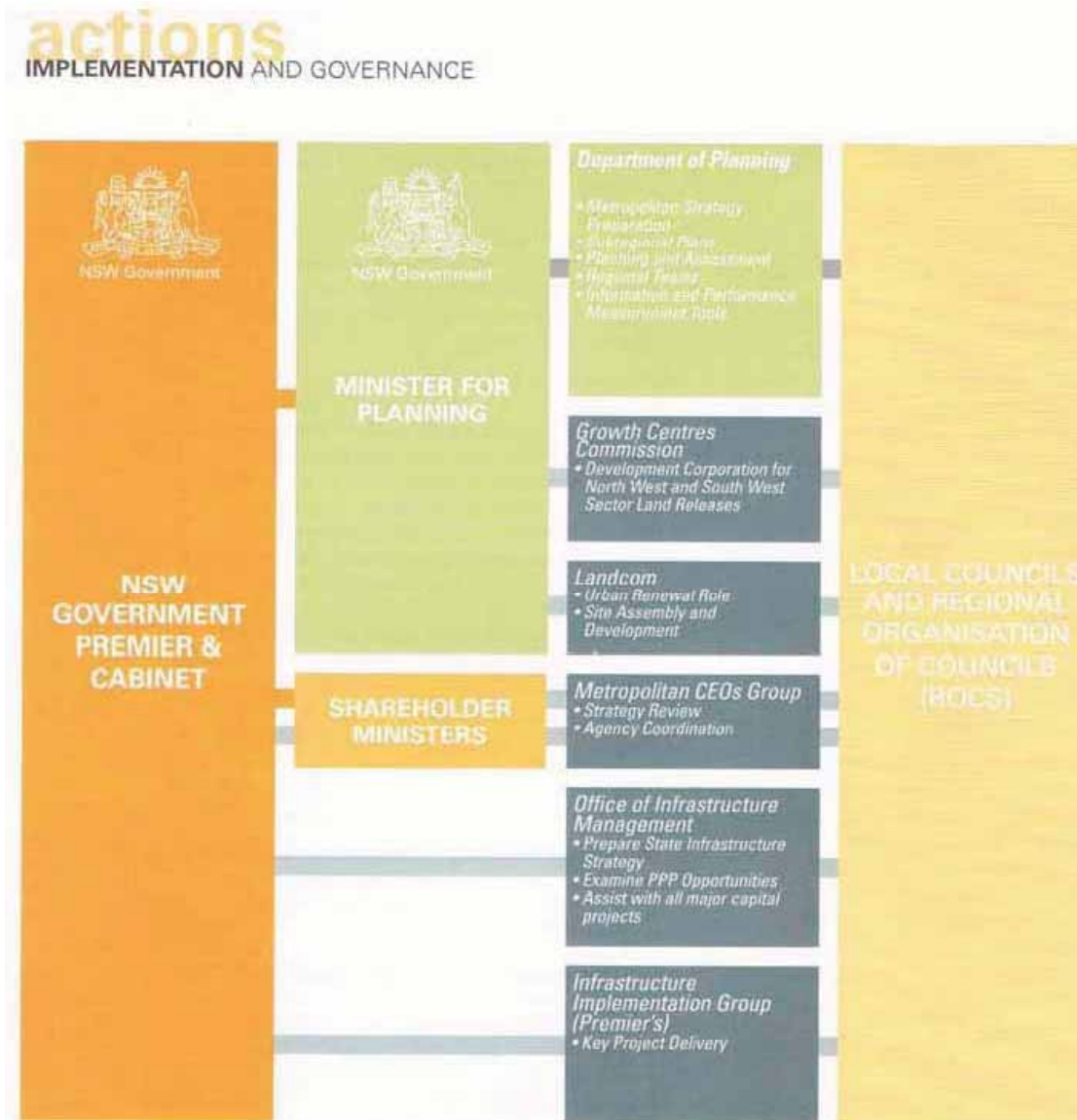


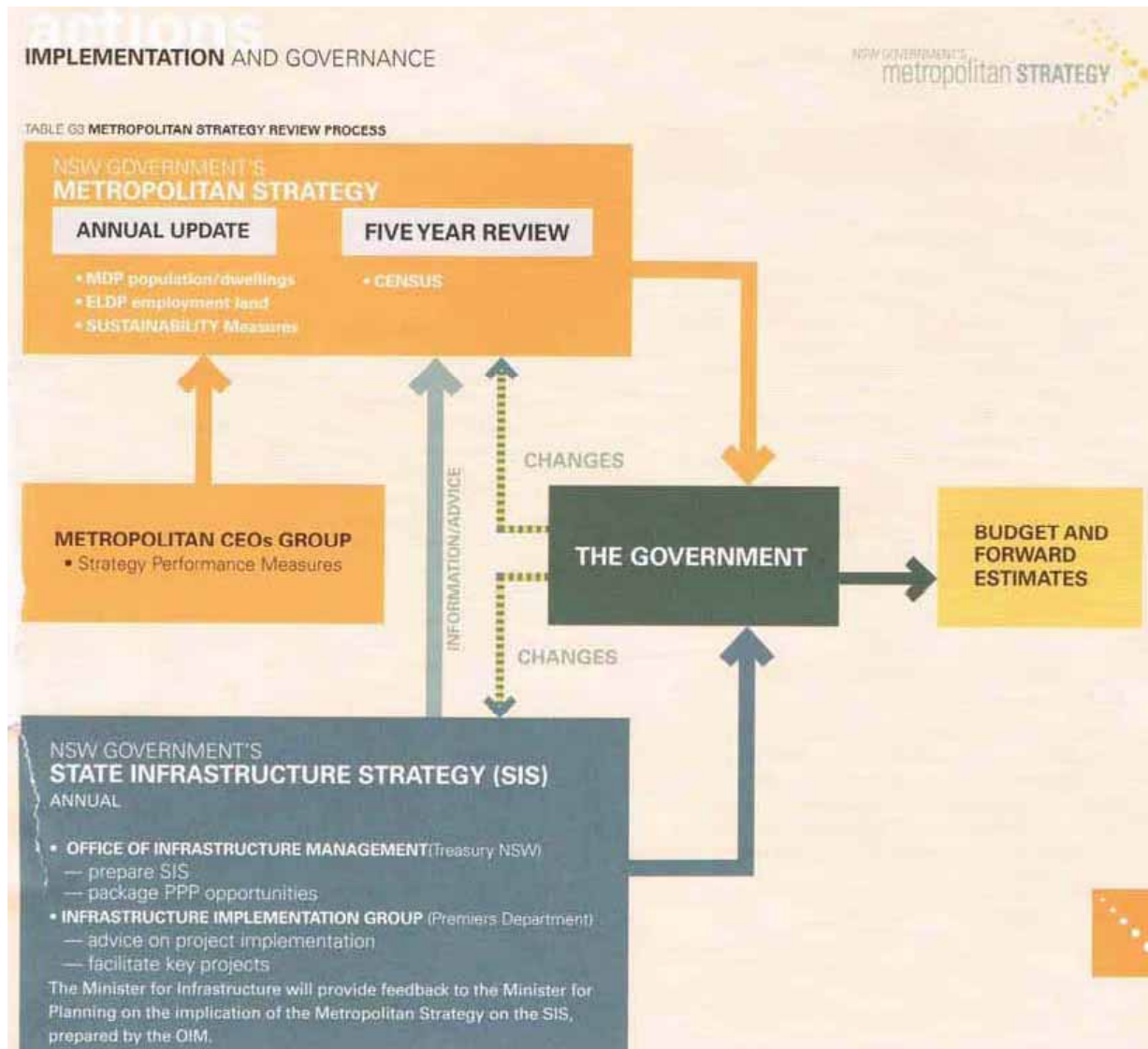
FIGURE G2 ROLES AND RELATIONSHIPS OF GOVERNANCE BODIES

## Commission 2 - Urban Growth and Planning

building sydney IMPLEMENTATION AND GOVERNANCE			metropolitan STRATEGY
METROPOLITAN STRATEGY AIMS INFLUENCE KEY GOVERNMENT FUNCTIONS			
METROPOLITAN STRATEGY AIMS			
STATE INVESTMENT PRIORITIES \$	STATE INVOLVEMENT IN STRATEGIC PLACES 🎯	SPATIAL PLANNING 📍	
<b>State Infrastructure Strategy</b> <ul style="list-style-type: none"> <li>• Preparation of Asset Management Plans</li> <li>• Project evaluation</li> <li>• Preparation of State Infrastructure</li> </ul>	<b>State Planning Places</b> <ul style="list-style-type: none"> <li>• Identification of places</li> <li>• Agency coordination</li> <li>• State significant planning and assessment</li> </ul>	<b>Subregional Planning</b> <ul style="list-style-type: none"> <li>• Information inputs/model</li> <li>• Council/agency engagement</li> <li>• Planning Reform Fund</li> </ul>	
<b>Leveraging Strategic Government Assets</b> <ul style="list-style-type: none"> <li>• Government Asset Management Committee</li> <li>• Office of Infrastructure Management (OIM)</li> </ul>		<b>Local Planning</b> <ul style="list-style-type: none"> <li>• Standard LEP</li> <li>• S117 Directions</li> <li>• Planning Toolkit</li> <li>• Place Managers</li> <li>• Independent Hearing and Assessment Panel</li> <li>• Planning Reform Fund</li> </ul>	
<b>Funding and Pricing</b> <ul style="list-style-type: none"> <li>• Infrastructure and service delivery</li> <li>• Value capture and pricing mechanisms</li> </ul>			
<b>Project Delivery and Finance</b> <ul style="list-style-type: none"> <li>• Public Private Partnership (PPP) suitability (OIM)</li> <li>• Delivery of key projects by Infrastructure Implementation Group (IIG)</li> </ul>			
	<b>Growth Centres Release Areas</b> <ul style="list-style-type: none"> <li>•</li> </ul>	<b>Monitoring</b> <ul style="list-style-type: none"> <li>• Housing (MDP)</li> <li>• Employment (ELDP)</li> </ul>	
	<b>Urban Renewal Sites</b> <ul style="list-style-type: none"> <li>•</li> </ul>		
<b>REVIEW OF THE METROPOLITAN STRATEGY AIMS</b> <ul style="list-style-type: none"> <li>• Annual reporting to Government</li> <li>• Metropolitan CEOs Group</li> <li>• Regional Organisation of Councils (ROCs)</li> </ul>			🔍

TABLE 7 METROPOLITAN STRATEGY AIMS AND GOVERNMENT PLANNING AND INVESTMENT

## Commission 2 - Urban Growth and Planning





# The Sustainable SYDNEY 2030





## Commission 2 - Urban Growth and Planning



**metropolis** ●



## Commission 2 - Urban Growth and Planning



"A city in 21<sup>st</sup> century is about Equity, Participation and Engagement"

Mary Lewin Dec 2009

**metropolis •**